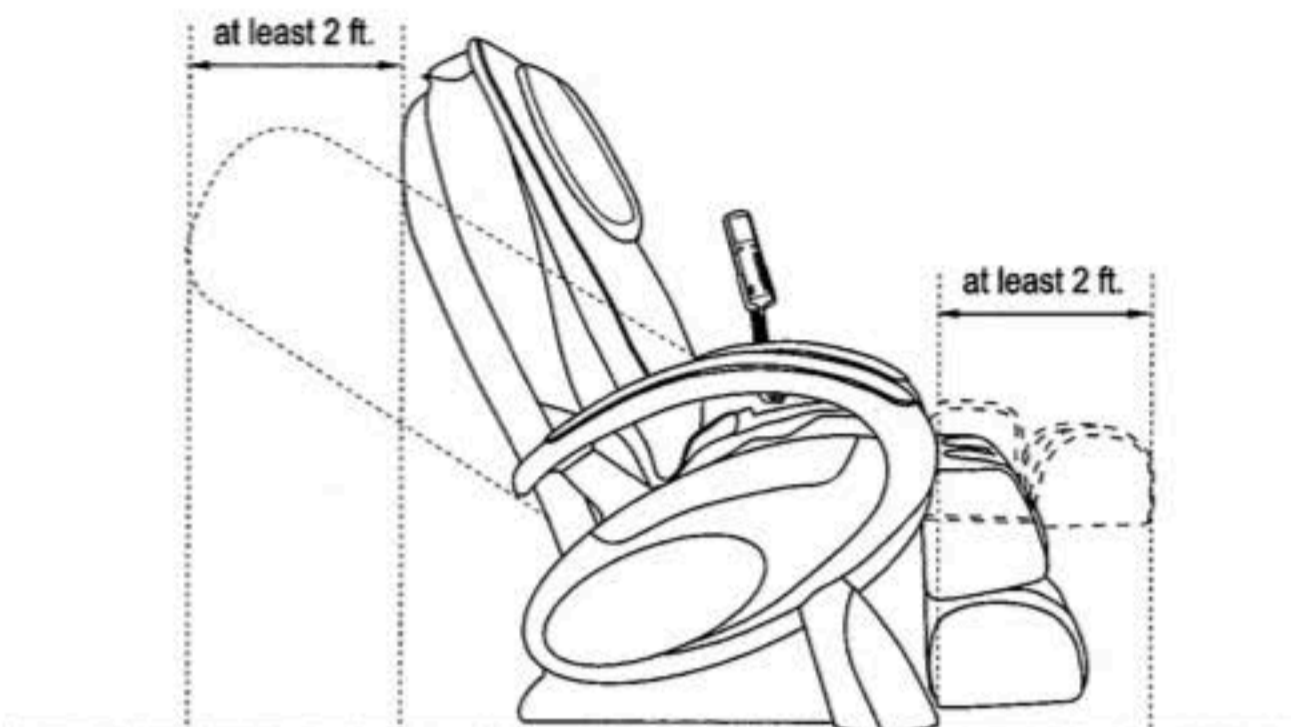


04 Chair Installation & Moving

Step 1:

When setting up the chair, make sure there is at least two feet of space behind the backrest and two feet of space in front of the footrest.

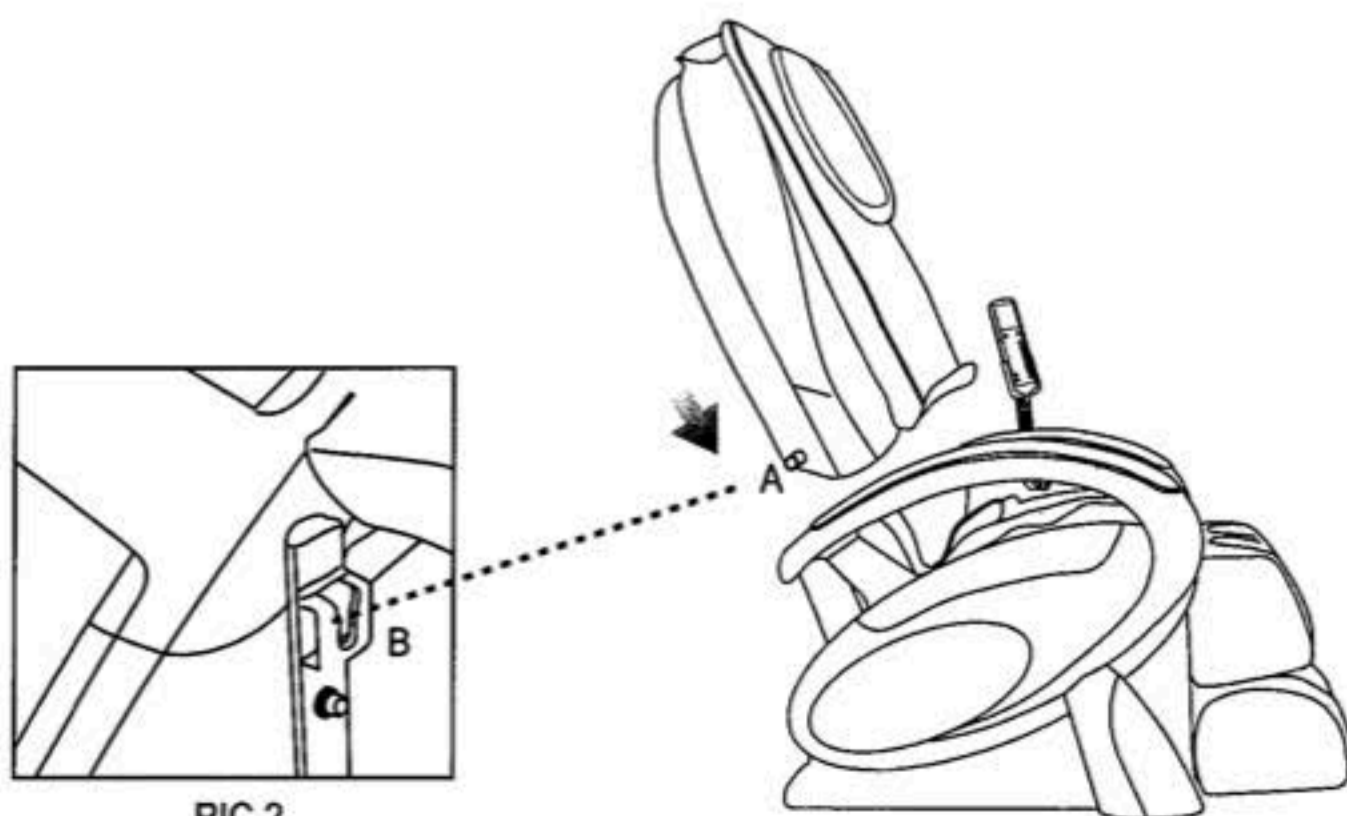


PIC 1

Step 2:

Lift the backrest, then lower the backrest into the seat brackets. Securely lock the flat head bolts into both sides of the seat.

Note: Carefully unwrap the armrest to avoid scratching during installation.



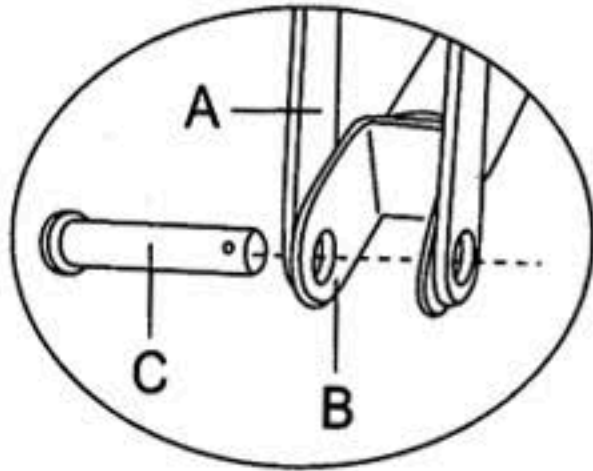
PIC 2

A: Flat Head Bolt (on the backrest)

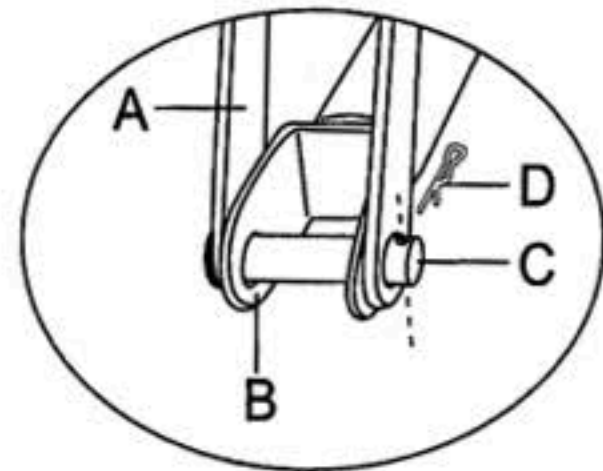
B: Holder (on the seat)

Attach the connecting rod and the U stay fork of the reclining actuator with the flat head rivet, and secure with a split pin as demonstrated in PIC 3 and PIC 4.

- A. Connecting rod (on the backrest)
- B. U stay fork of reclining actuator (on the seat)
- C. Flat head rivet
- D. Split pin



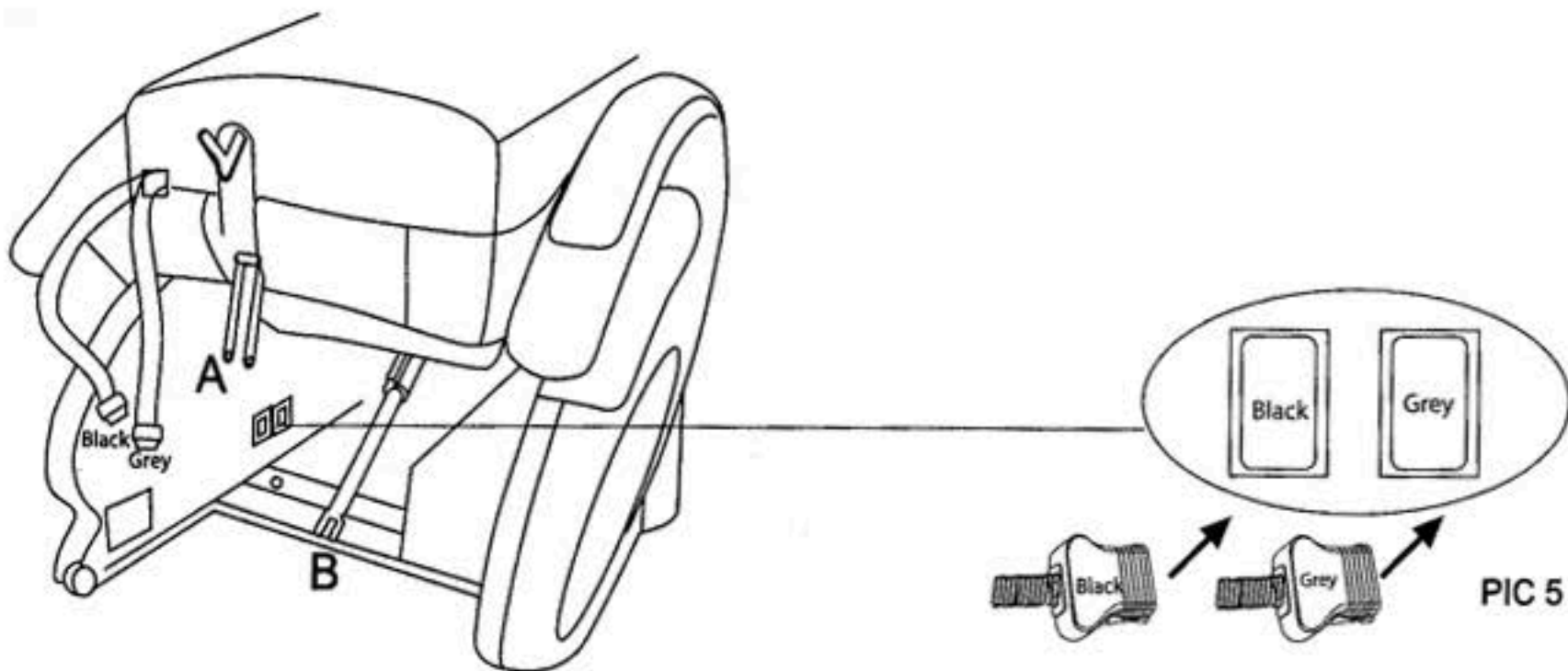
PIC 3



PIC 4

Insert the wire plugs into the seat as demonstrated in PIC 5.

Note: Insert black to black and gray to gray, otherwise damage to the chair may result.

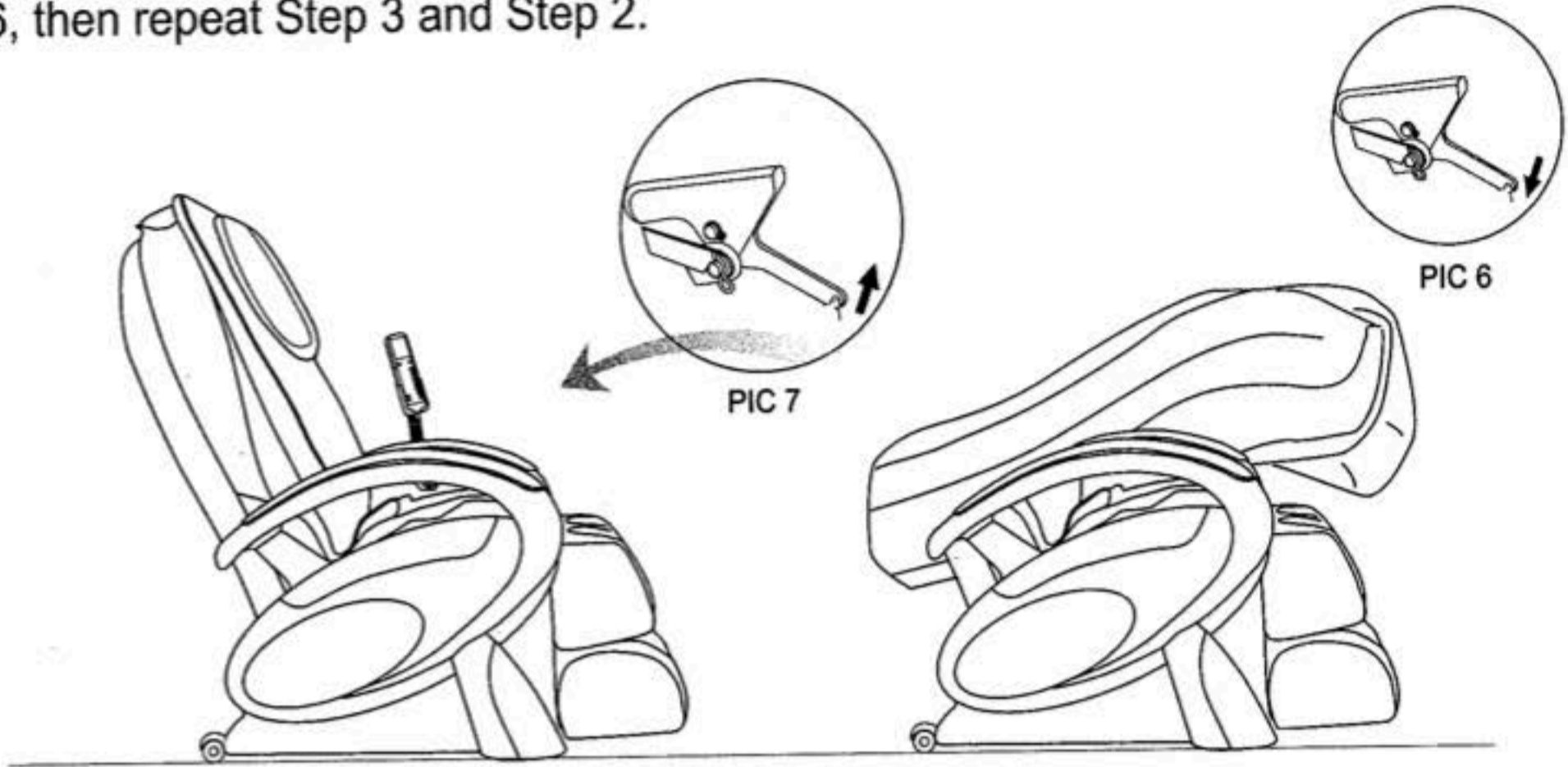


PIC 5

Step 3:

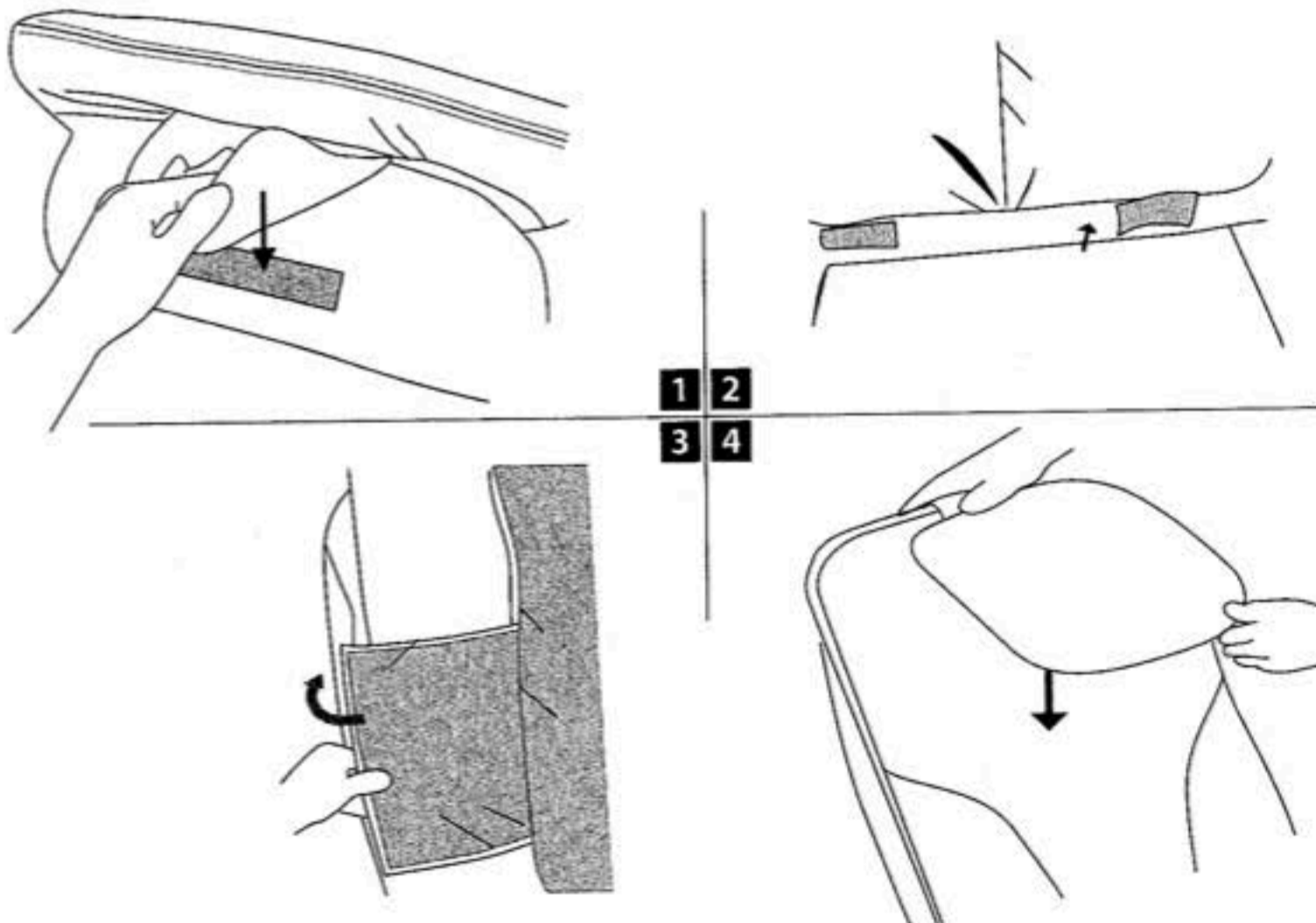
Unfold the backrest until you hear a "click" sound.

Note: To separate the backrest from the seat, press the "stopper" as demonstrated in PIC 6, then repeat Step 3 and Step 2.



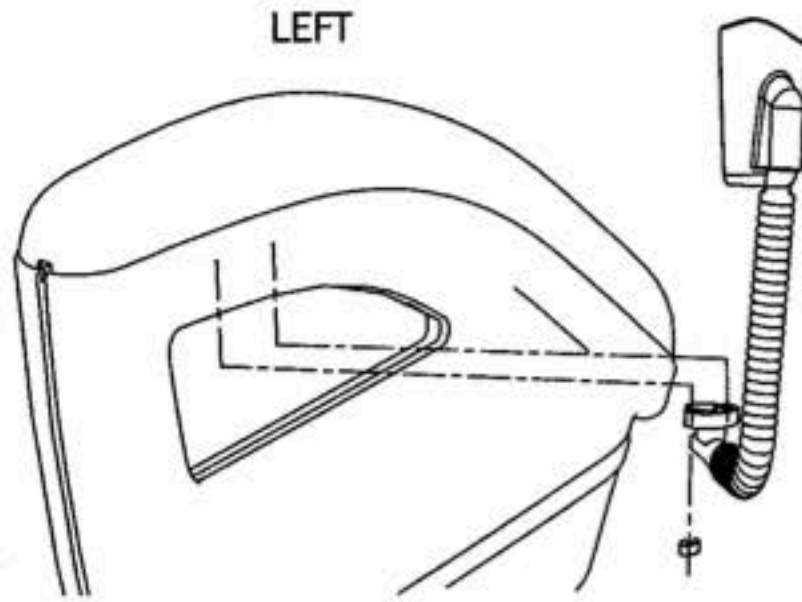
Step 4:

Attach the backrest pad and the pillow pad with the hook and loop fasteners.



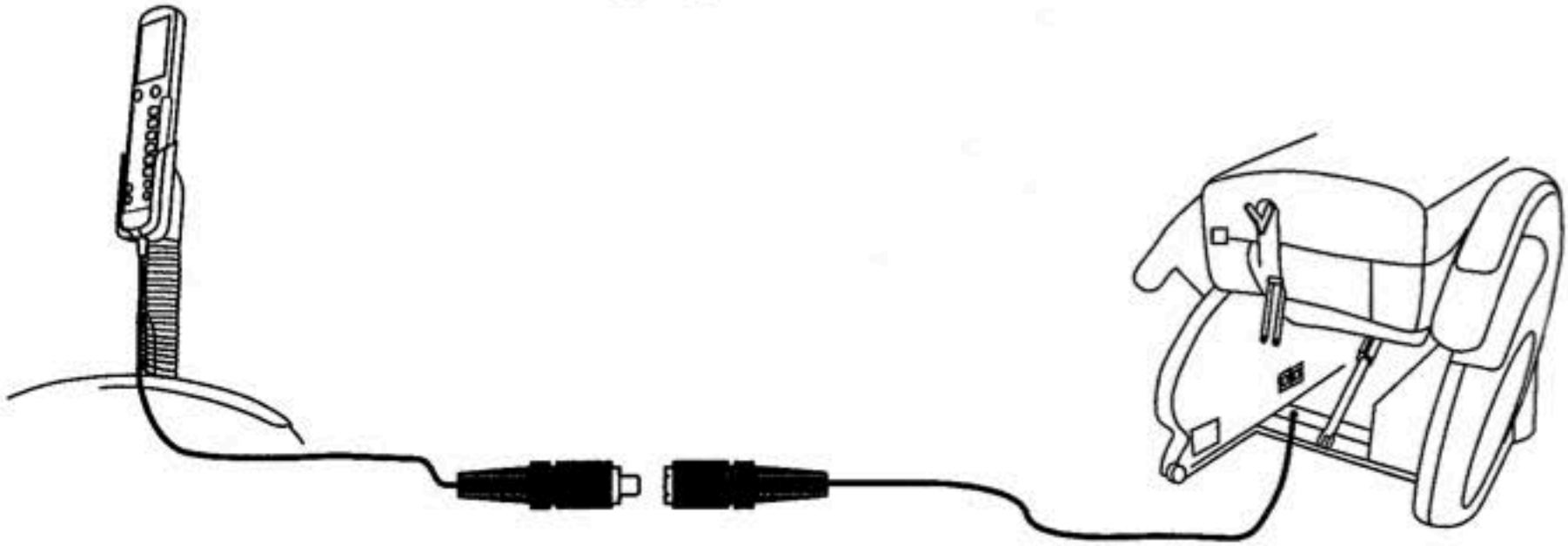
PIC 8

Step 5
Install the controller stand by tightening the screw as demonstrated in PIC 9.



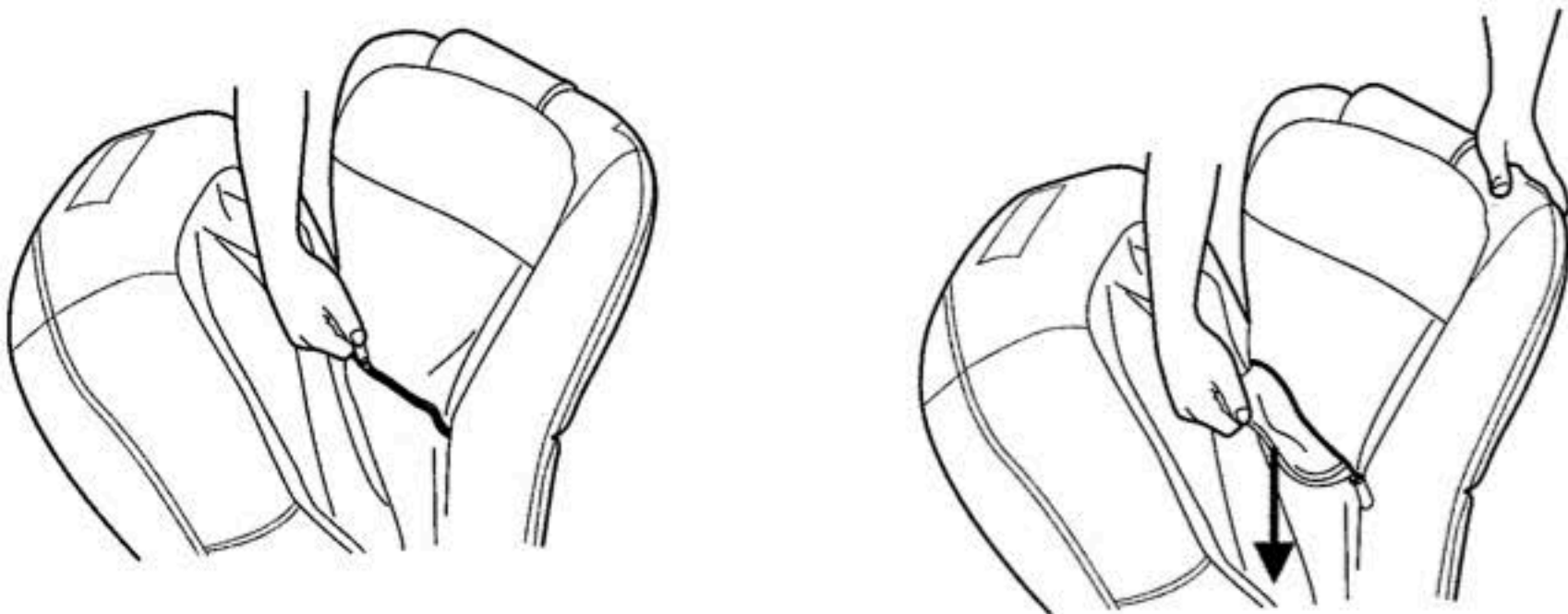
PIC 9

Step 6
Connect the remote controller wire plugs as demonstrated in PIC 10.



PIC 10

Step 7 (Optional)
Remove the spare pad located in the backrest cover for a deeper massage.



PIC 11

Moving the chair

1. Restore the footrest to its original position.
2. Hold down on the top of the backrest and tilt approximately 45 degrees. Move the chair using the wheels as the fulcrum.

Note:

- 1) Always return the footrest to its original length and restore it to its original position before moving the chair. Otherwise, injury during movement may result.
- 2) Do not move the chair while a person is seated on it.
- 3) Place a mat on the floor and gently roll the chair over it to avoid damaging the floor.

